

Energy efficiency

WHAT IS *quîck***SATE** ?



quîckSATE



**External Thermal Insulation
Composite Systems**

WHAT IS *quîck*SATE ?

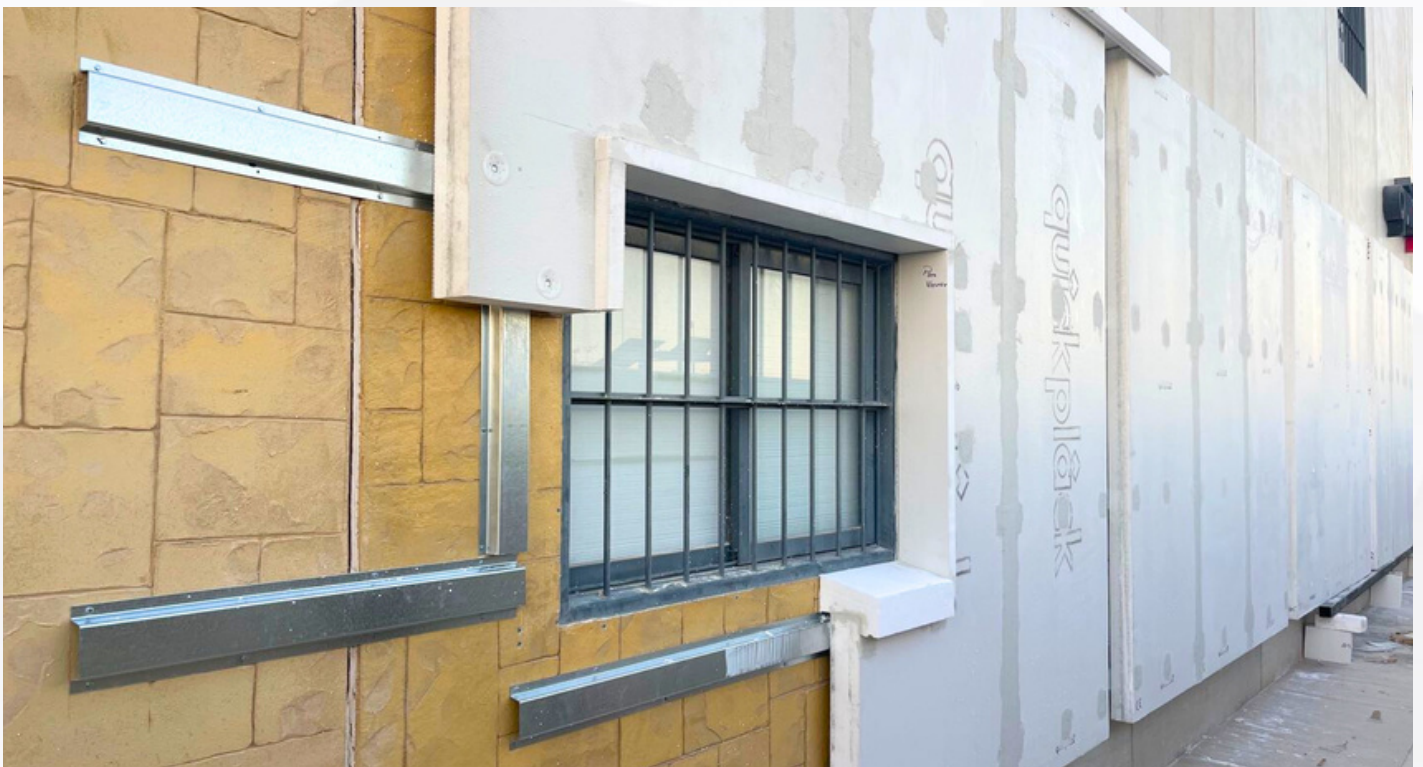
Efficient innovation



quîckSATE

ETICS (External Thermal Insulation Composite Systems) is a construction technique that consists of installing insulating material on the exterior of buildings and homes for façade renovation. This helps to maintain a constant temperature inside, saving energy and improving comfort.

What is quîckSATE: It is an innovative system that improves the characteristics of the traditional **ETICS** since, due to the use of support profiles and our large format quîckplâck panel, it significantly reduces execution times and costs, without altering in any way the comfort advantages offered by the External Thermal Insulation Composite Systems (**ETICS**).



BUILDING REHABILITATION



The **quïckSATE** system basically consists of the installation of our large format **quïckplâck** panels on the exterior of the façade, supported by a specific arrangement of metal profiles fixed to the façade. The **quïckplâck** panel is fixed to the profile structure by means of a mechanical and chemical fastening.

quïckSATE vs Traditional ETICS



COMPARATIVE ADVANTAGES AND DISADVANTAGES



quickSATE

ETICS Tradicional



Size



Fixation



ADVANTAGES quickSATE

- Time and labor savings
- We do not depend on the degree of deterioration of the pre-existing wall.
- Fastening on metal profiles. Eliminates flatness problems.
- Factory-meshed paneling. Only joint treatment is required
- Air chamber. Greater thermal insulation

DISADVANTAGES Traditional ETICS

- Reduced panel size
- Longer execution time
- Increased labor
- On-site framing resulting in less quality control
- Less thermal insulation

7 REASONS TO CHOOSE quickSATE



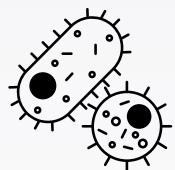
1


+60% ENERGY EFFICIENCY

6


IMPROVEMENT OF THE THERMAL COMFORT OF THE DWELLING

2


REDUCED RISK OF CONDENSATION, MOLDS AND FUNGI

7


THE USABLE AREA OF THE DWELLING IS MAINTAINED

3


ELIMINATION OF THERMAL BRIDGES IN THE BUILDING



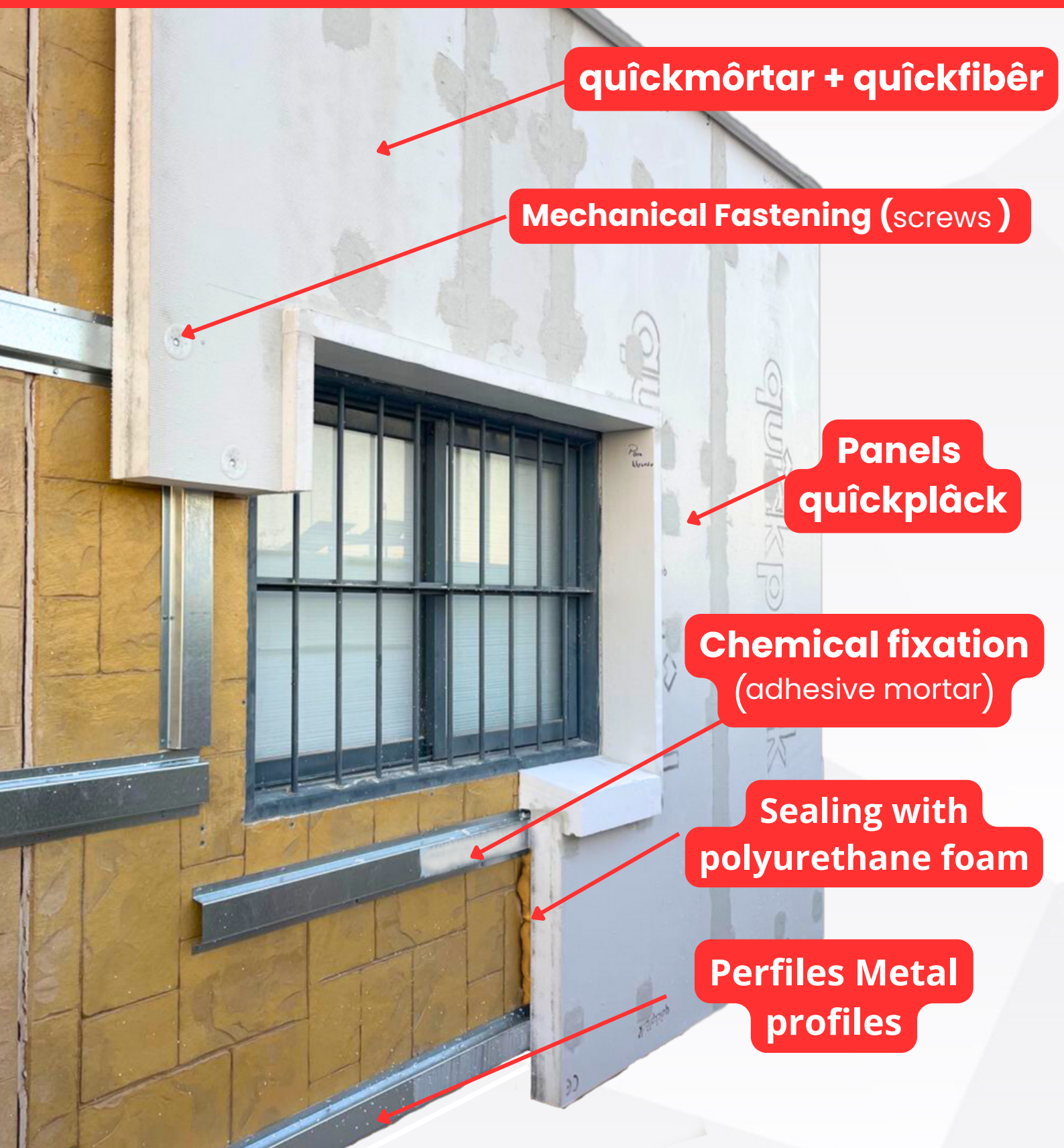
4


ENVIRONMENTALLY FRIENDLY

5


MINIMUM INCONVENIENCE TO USERS DURING INSTALLATION

Parts of quickSATE facade
FACADE SYSTEM



quïckmôrtar + quïckfibêr

Mechanical Fastening (screws)

**Panels
quïckplâck**

**Chemical fixation
(adhesive mortar)**

**Sealing with
polyurethane foam**

**Perfis Metal
profiles**

FIND MORE INFORMATION



quickSATE - Exterior Thermal Insulation System Dossier



FIND OUT **NOW** HOW TO INSTALL quickSATE



www.quickplack.com/descargas

www.quickplack.com