

quîckîmper



S,

Data sheet

Waterproof coating free of asphalts that once dry provides a continuous coating of thick layer, which prevents water seepage on both horizontal and vertical surfaces.

Flexible and resistant to traction adapts to the irregularities of the support resisting the dilatations and contractions of the treated surface.

COMPOSITION

Self-crosslinking acrylic resin, titanium dioxide, micronized iron oxides, calcium carbonate, magnesium silicate.

PROPERTIES

- Very waterproof.
- Microporous.
- Continuous film very flexible and resistant.
- It maintains elasticity over time.
- Very adherent, it adapts to the irregularities of the support.
- Resistant to atmospheric agents.

FIELDS OF APPLICATION

For the waterproofing of terraces, balconies, roofs, facades, walls in new construction or in renewal.



TECHNICAL CHARACTERISTICS

Resin:	Self-crosslinking acrylic resin
Density:	1,32 +/- 0,05 kg/l
Solid content in weight:	65 +/- 1%
Colour:	White, red tile, gray and green.
Aspect of the film:	Satin
Drying:	to the touch 4-8 hours
Repainted:	24 hours
Total dry:	14 to 21 days
Theoretical performance:	1 kg/m2 and hand to get a layer thickness 0'6 mm.

COV CLASSIFICATION

Max content of COV permitted 2010: 140 g/l.
Max content of COV: 20 g/l.

HYGIENE AND SECURITY

During your application a good aeration of the premises. See instructions regulations on its packaging.

COMMISSIONING

On new surfaces without painting:

a) Concrete: Make sure that the support is clean, dry and with the necessary maturation time to the air (at least three weeks). If the surface presents a disintegrated or powdery appearance, apply a **quickmôrtar** hand first.

b) Tiles or tiles: They must be clean, dry, without residues of residue or arid. Then apply **quickimper** in successive layers (usually 2-3 hands) to obtain the desired thickness.

If necessary, you can insert a layer of **quickfiber** (fiberglass mesh) to increase the resistance to mechanical stress.

On painted surfaces in good condition.:

Make sure the surface is clean and free of oil or grease and paint directly.

On old surfaces already painted:

On old continuous layer waterproofing, review the possible cracks and fissures with **quickimper**, mixed with washed fine sand, in proportion of 2 parts of **quickimper** and a part of sand, applied by means of a spatula or a trowel. Then, after the treatment has dried, apply a general layer of **quickimper** to the entire surface, preferably with the addition of **quickfiber** (glass fiber mesh). On deteriorated and leaking asphalt fabrics, if it has been produced only in the union of the fabrics, it is possible to solve the problem by sealing them, by applying an abundant layer of **quickimper** in said union of the fabrics and throughout it. After this application has been thoroughly dried, give one or two **quickimper** hands in such a way that it protrudes from the union of the asphalt fabrics, at least ten centimeters, preferably including **quickfiber** (fiberglass mesh). If there is a suspicion of possible faults of the fabric in areas other than the joints, thoroughly clean the entire surface and proceed as described for new surfaces. If desired, **quickimper** can be coated with a layer of fine sand, and concrete mortar or tiles.

Do not apply at temperatures below 5°C or above 35°C and the ambient relative humidity must be less than 80%. The support must be dry (less than 10% relative humidity). Applied in a thick layer, the drying time will be between 4 and 8 hours depending on the temperature and humidity.

Do not apply in full sun at noon or if rain is expected before 6 hours of application.

COMMISSIONING

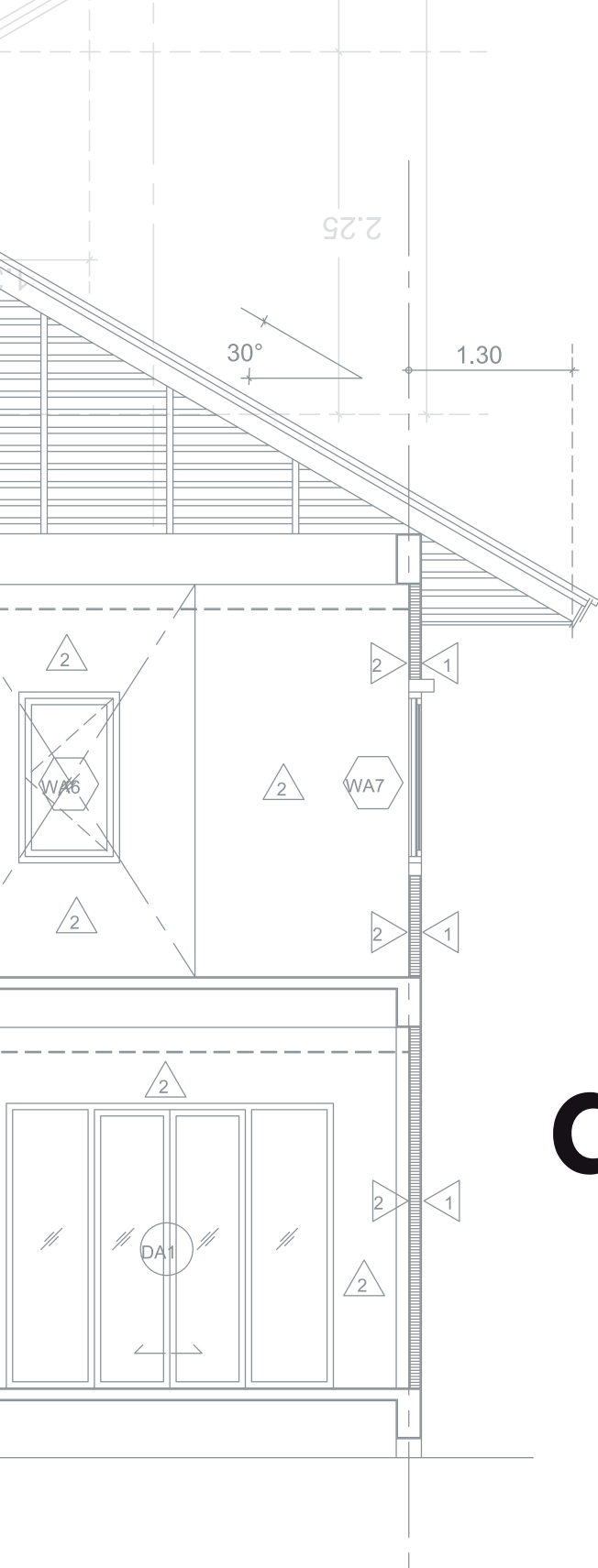
- By brush or roller undiluted.
- With airless dilute maximum 3%.
- Apply in two three hands minimum.
- Remove the boat before starting.
- Clean tools with plenty of water immediately after use.

CONTAINERS

15 liter drums

STORAGE

24 months in their drums of unopened origin, stored in the shelter of the sun and frost, not higher temperatures at 30°C or below 5°C.



quîckplâck®

España

+34868128999

+34619199399

+34606852013

Panamá

+507 833 7662

Estados Unidos

+1 407 413 9329

quickplack@quickplack.com

www.quickplack.com